

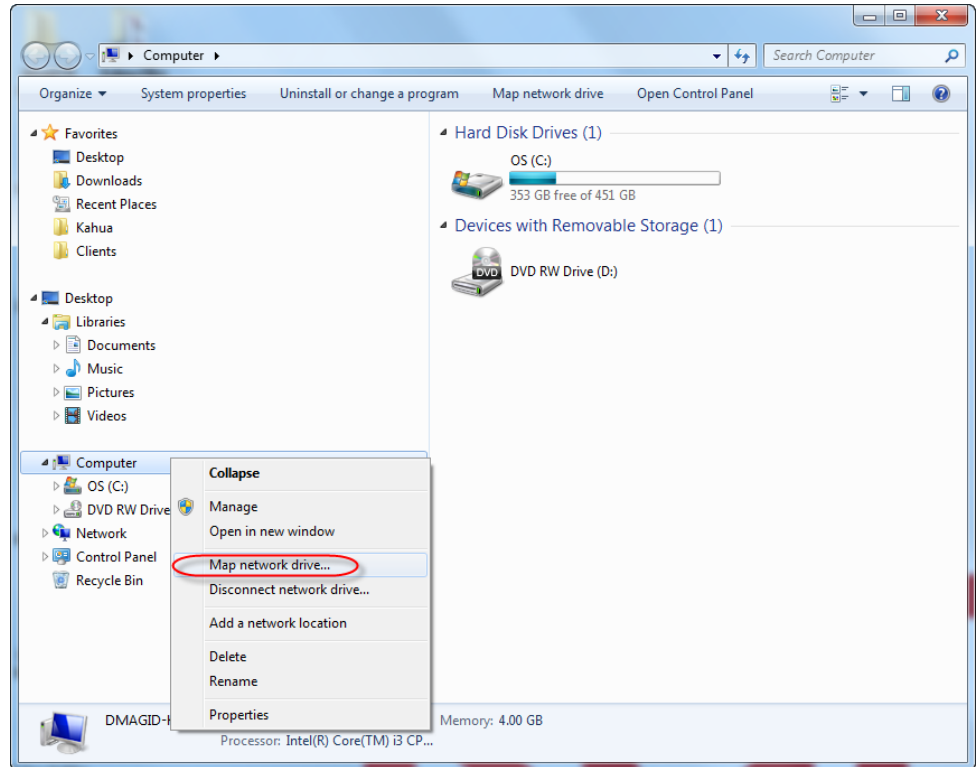
Kahua Windows Extension

Setup Instructions



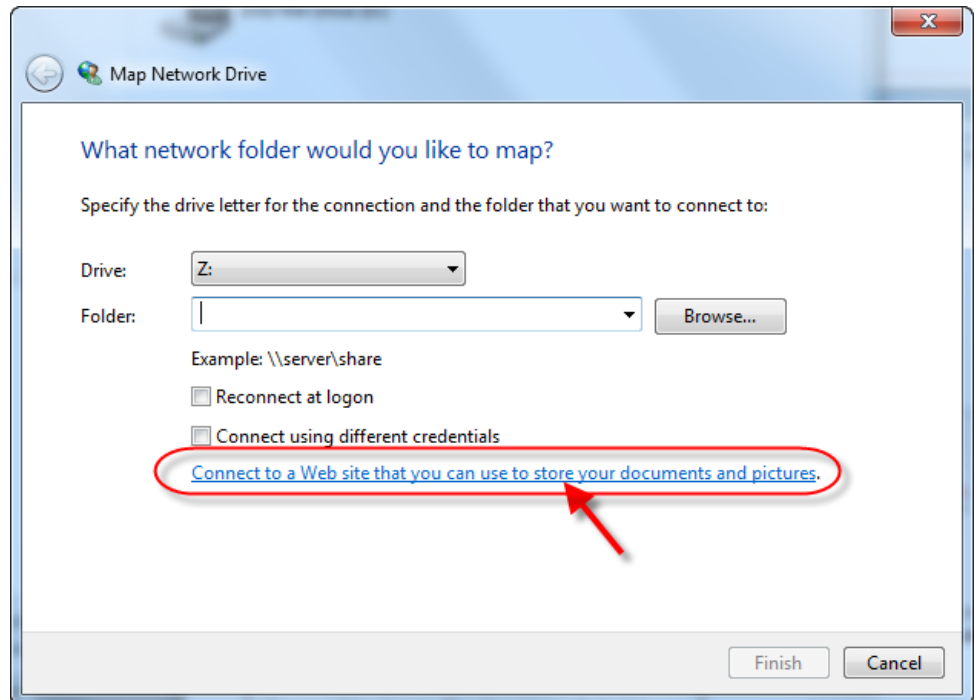
Step 1:

Open Windows Explorer and right click on My Computer. Select the 'Map network drive..' option.



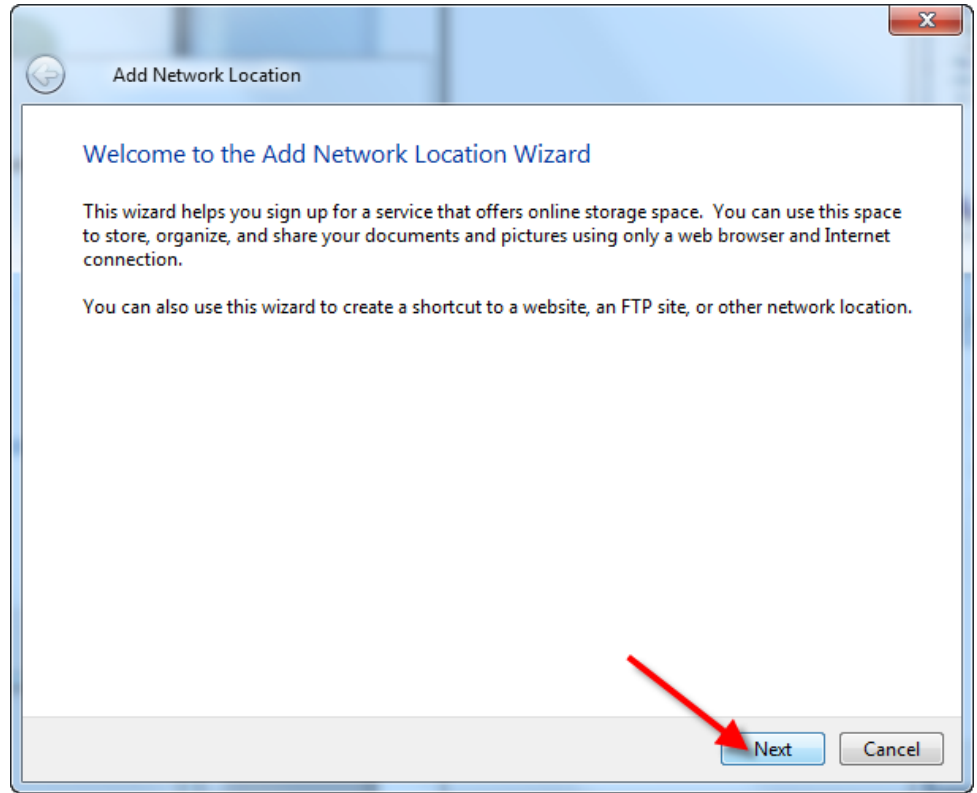
Step 2:

Click the 'Connect to a Web site' link.



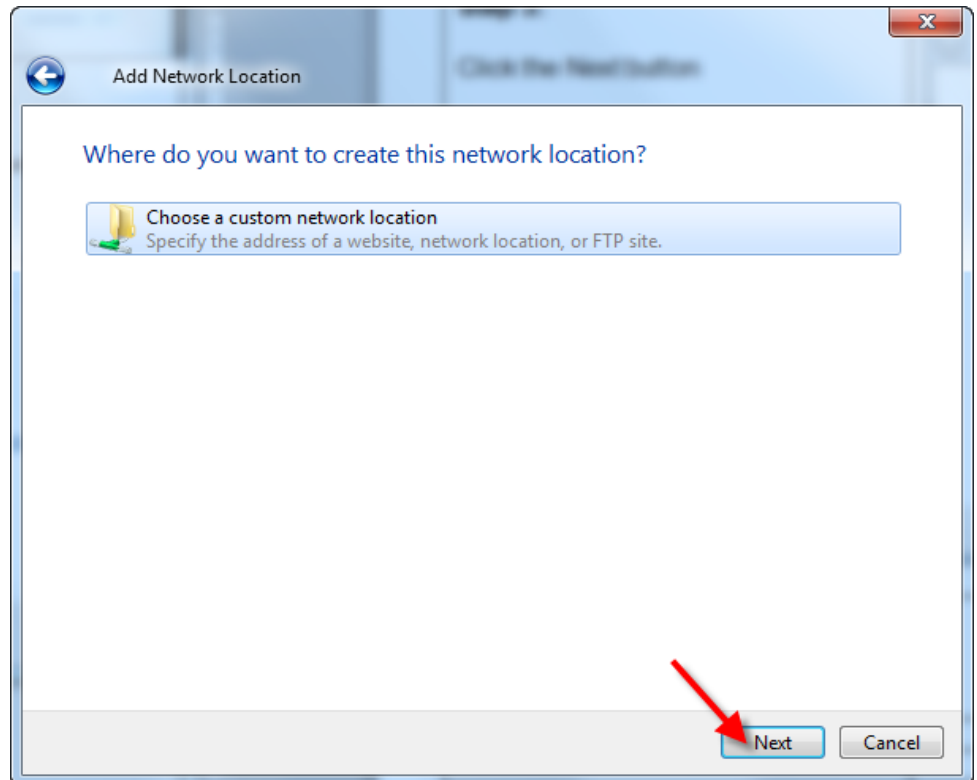
Step 3:

Click the Next button.



Step 4:

Click the 'Choose a custom network location' link. Then click the Next button.



Kahua Windows Extension

Setup Instructions

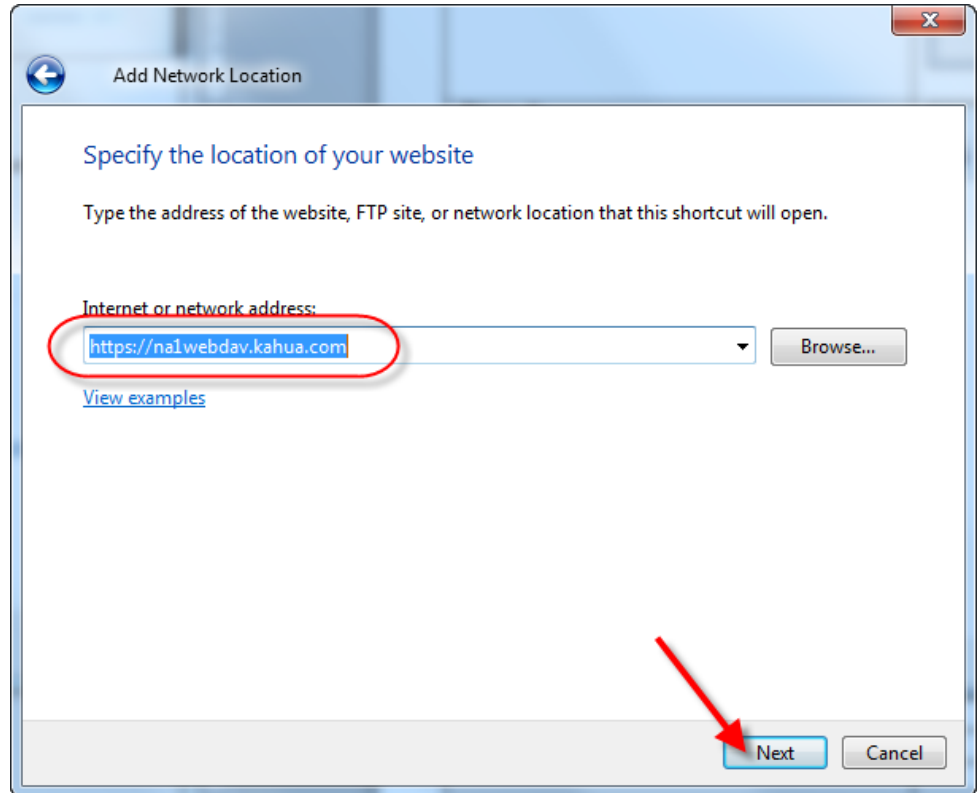


Step 5:

Enter:

<https://na1webdav.kahua.com>

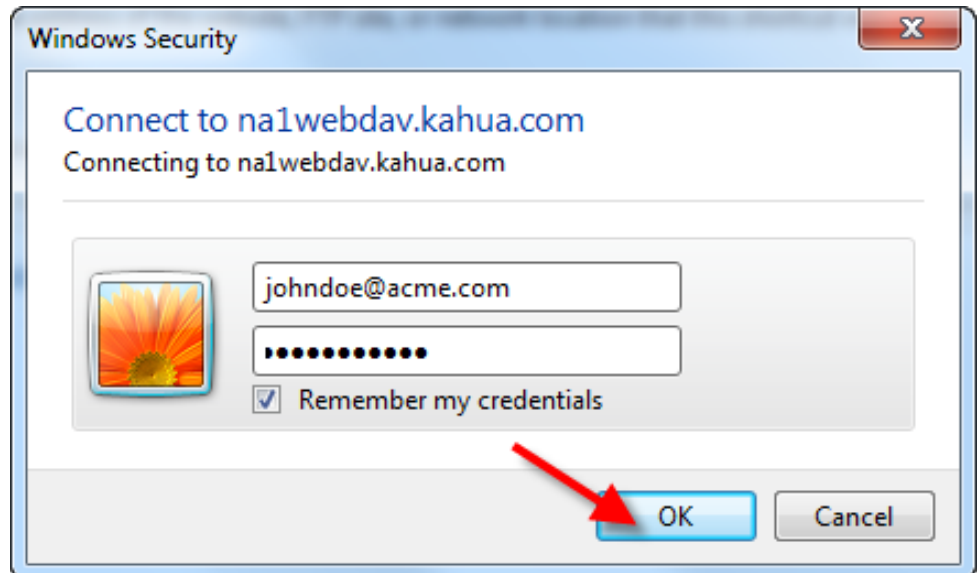
Click the Next button.



Step 6:

Enter your Kahua username and password.

Click the OK button.



Kahua Windows Extension

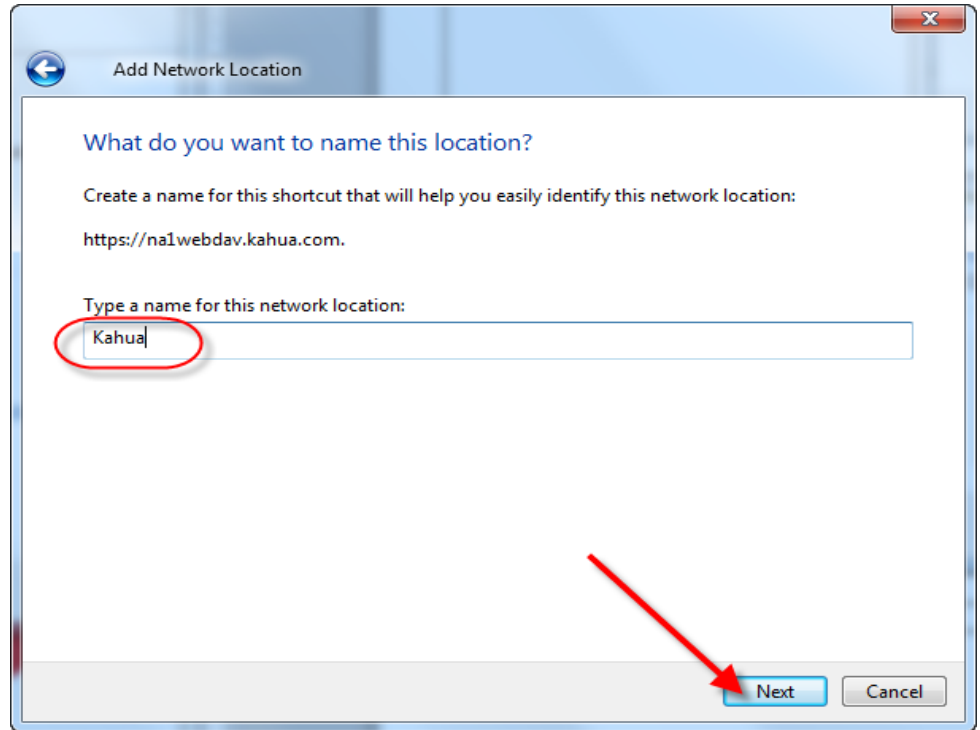
Setup Instructions



Step 7:

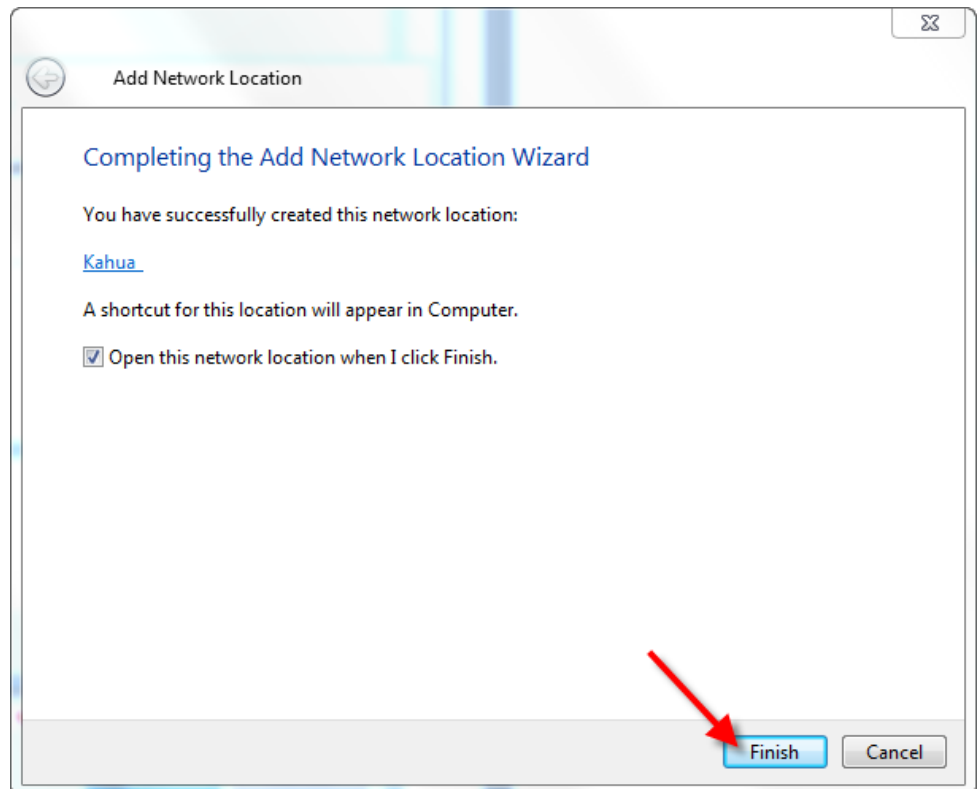
Give the new folder a name.

Click the Next button.



Step 8:

Click the Finish button.



Kahua Windows Extension

Setup Instructions



The Kahua folder will now appear in Windows Explorer.

